

IBM® DB2® Web Query for i™ 5733WQX Install Instructions – Version 2.2.0 (Updated 03/29/2017)

This document provides the instructions for installation and setup of DB2 Web Query, 5733WQX, version 2.2.0. It is recommended that the steps be completed in the order listed. All steps should be performed under the sign-on of QSECOFR or a user with *SECADM and *ALLOBJ authority, unless stated otherwise.

1. Install prerequisite products, options, and PTFs

Review the 5733WQX prerequisite programs, options and PTFs listed in Info APAR III4818, and verify that all prerequisites are installed for your version of IBM i. The APAR is located at <https://ibm.biz/BdirFq>.

2. Restore the DB2 Web Query licensed program

The IBM i standard and keyed media set will include DB2 Web Query 2.2.0 when ordered after April 15, 2016. The 5733WQX base product and all options are included on one disc. If your Web Query discs are older than 2.2.0, order a new copy or download it from Entitled Software Support (ESS). Detailed steps for ESS can be found in the FAQ at <http://ibm.co/db2wqfaq>. The 2.2.0 disc is identified by the following label information.

```
IBM i
DB2 Web Query for i
5733-WQX V2.2.0
F_MULTI_NLV
LCD8-1900-02
```

To install the base product and optional features, use the Restore Licensed Program (RSTLICPGM) command. Minimally, you must install the base product, Express or Standard Edition, and Developer User options. Example commands are shown below. Substitute OPT01 with your optical drive. For each restore command, read the license agreement and press F14 to accept it.

- RSTLICPGM LICPGM(5733WQX) DEV(OPT01) – **Base product**
- RSTLICPGM LICPGM(5733WQX) DEV(OPT01) OPTION(1) – **Express Edition**
- RSTLICPGM LICPGM(5733WQX) DEV(OPT01) OPTION(2) – **Standard Edition**
- RSTLICPGM LICPGM(5733WQX) DEV(OPT01) OPTION(4) – **Developer Users**
- RSTLICPGM LICPGM(5733WQX) DEV(OPT01) OPTION(5) – **Developer Workbench Users**
- RSTLICPGM LICPGM(5733WQX) DEV(OPT01) OPTION(6) – **Runtime Enablement Groups**
- RSTLICPGM LICPGM(5733WQX) DEV(OPT01) OPTION(7) – **JD Edwards Adapter**
- RSTLICPGM LICPGM(5733WQX) DEV(OPT01) OPTION(8) – **DataMigrator for i**

3. Set a password and CCSID for the QWQADMIN profile

When the product is installed, it creates a user profile QWQADMIN with no password. Set a password for the profile using the command CHGUSRPRF USRPRF(QWQADMIN) PASSWORD(<yourpwd>). Failure to do so will prevent DB2 Web Query from starting.

The Web Query server's code page should correspond to the CCSID of your data to reduce data conversions. If one of the following conditions apply, set the CCSID in the QWQADMIN profile to override the default system CCSID for server jobs:

- The default system CCSID is 65535.
- The default system CCSID is different than the CCSID of the data accessed by your reports.

To check the value of the default system CCSID, use the command `DSPSYSVAL QCCSID`.

To set the CCSID in the QWQADMIN profile, use the `CHGUSRPRF` command. Here is an example command for the English CCSID: `CHGUSRPRF USRPRF(QWQADMIN) CCSID(37)`.

4. Add license keys

For new installations, you have a 70-day trial period before you are required to enter license keys. Add license keys for the base product and each optional feature using the Add License Key Information (`ADDLICKEY`) command.

5. Start DB2 Web Query

To start DB2 Web Query, use option 1 of the Work with Web Query (`WRKWEBQRY`) tool. Alternatively, you can use the Start Web Query (`STRWEBQRY`) command.

To end DB2 Web Query, use the `WRKWEBQRY` tool, the End Web Query (`ENDWEBQRY`) command, or the End Subsystem (`ENDSBS`) command for the Web Query subsystem. When ending the subsystem, do not use the default `DELAY(*NOLIMIT)` parameter on the `ENDSBS` command. Instead, specify a number of seconds to delay for a controlled end or specify `OPTION(*IMMED)`. Here is example syntax:

```
ENDSBS SBS(QWEBQRY21) DELAY(60)
ENDSBS SBS(QWEBQRY21) OPTION(*IMMED)
```

6. Add licensed users

When DB2 Web Query is active, go to `http://your_system:12331/webquery`, where *your_system* is the name or IP address of the system with Web Query installed. Login using the administrative profile, QWQADMIN. Click Administration and then click Security Center.

From the Security Center you can add licensed users and assign permissions. For more information, refer to the Security Concepts section of the DB2 Web Query 2.1.0 New Features document at <http://ibm.co/db2wqnewfeatures>.

7. Install the Developer Workbench client (optional)

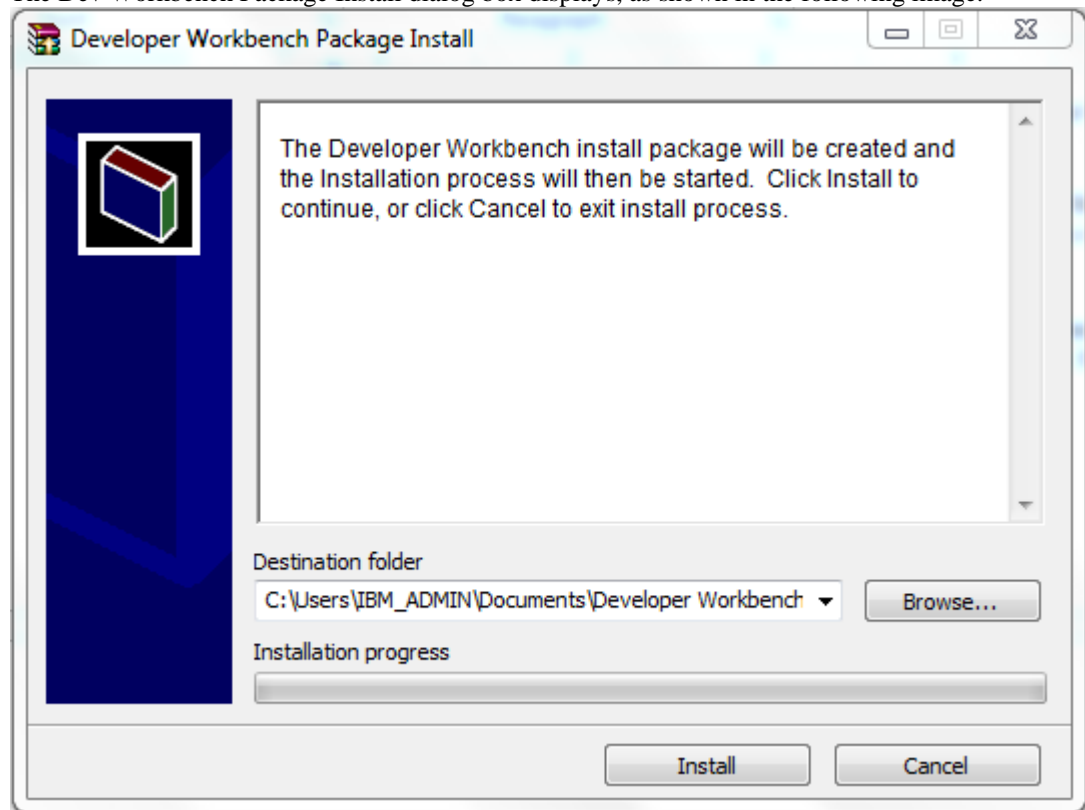
If you installed option 5, Developer Workbench Users, then the licensed users of this option should download and install the Developer Workbench client on their PCs. To install the client, follow these steps.

- A. Download the three files in binary from the IFS directory `/qibm/ProdData/QWEBQRY/DeveloperWorkbench` to a folder on the Windows PC. The file names are:
[WQDevWork220.sfx.part1.exe](#)
[WQDevWork220.sfx.part2.rar](#)

[WQDevWork220.sfx.part3.rar](#)

- B. Run WQDevWork220.sfx.part1.exe.

The Dev Workbench Package Install dialog box displays, as shown in the following image.



Note: Clicking Install will create a new WQDevWork220.exe file in the same folder where you are running WQDevWork220.sfx.part1.exe. Optionally, you can change the destination folder for the new file.

- C. Click *Install*. The WQDevWork220.exe file will be created in the Destination folder. The WQDevWork220.exe will then automatically run, and the Developer Workbench installation wizard will start.

The installation and setup of DB2 Web Query is now complete and you are ready to create and run reports. Details on configuring the product's features can be found in the Product Manual at <https://ibm.biz/Bd4vj6>. You can also refer to the Web Query wiki at <http://ibm.co/db2wqwiki> for links to the user forum, videos, service levels, feature articles, and other getting started information.

APPENDIX A: NLS Configuration

Follow the instructions in this appendix if you wish to configure Web Query for any of these:

- Language other than English
- NLS settings such as
 1. Setting the default currency symbol
 2. Setting the default numeric formatting

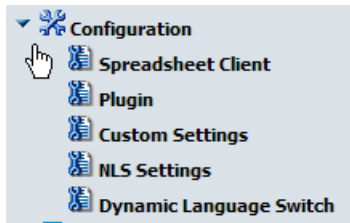
The Web Query user interface currently supports the following languages:

Arabic-2954
Brazilian-Portuguese-2980
Chinese-Simplified-2989
Chinese-Traditional-2987
Croatian-2912
Czech-2975
Danish-2926
Dutch-2923
Dutch-Belgium-2963
English-2924
English DBCS-2984
English Uppercase DBCS-2938
Finnish-2925
French-2928
French-Belgium-2966
French-MNCS-2940
French Canadian-2981
German-2929
German-MNCS-2939
Hebrew-2961
Hungarian-2976
Italian-2932
Italian-MNCS-2942
Japanese-Upper/Lower-2930
Japanese-DBCS-2962
Korean-2986
Norwegian-2933
Polish-2978
Portuguese-2922
Portuguese-MNCS-2996
Romanian-2992
Russian-2979
Slovakian-2994
Spanish-2931
Swedish-2937
Turkish-2956

Post installation steps for NLS configuration

Step 1: Enable the languages for the drop-down list

Go to URL <http://sysname:12331/webquery>. Login using the QWQADMIN user ID. Click on Administration, then Administration Console.



Click on Configuration, and then Dynamic Language Switch. This switch enables the selection of languages that will appear on the Language drop down list on the login page. It is used for the DB2 Web Query user tools and GUI.

In the Dynamic Language Switch window, the languages shipped with DB2 Web Query are displayed. By default, the Dynamic Language Switch and the language check boxes are unchecked. Click the Dynamic Language Switch check box to enable it. Doing so activates the Enable option check boxes for all languages. The default language (English) is automatically enabled. Click the check boxes for additional languages you want to appear in the Language drop-down list on logon pages.

Once you select a language, only those that share the same character encoding will be available to be enabled. For example, Asian languages may only be enabled with English. European languages may be enabled with each other and English.

Dynamic Language Switch	
<input checked="" type="checkbox"/>	Dynamic Language Switch
<input type="checkbox"/>	Check all languages
<input type="checkbox"/>	Arabic
<input type="checkbox"/>	Chinese - Simplified GB
<input type="checkbox"/>	Chinese - Traditional Big-5
<input type="checkbox"/>	Croatian
<input type="checkbox"/>	Czech
<input type="checkbox"/>	Danish
<input type="checkbox"/>	Dutch
<input checked="" type="checkbox"/>	English
<input type="checkbox"/>	Finnish
<input type="checkbox"/>	French - Canadian
<input type="checkbox"/>	French - Standard
<input checked="" type="checkbox"/>	German
<input type="checkbox"/>	Hungarian
<input type="checkbox"/>	Italian
<input type="checkbox"/>	Japanese
<input type="checkbox"/>	Korean
<input type="checkbox"/>	Norwegian
<input type="checkbox"/>	Polish
<input type="checkbox"/>	Portuguese - Brazilian
<input type="checkbox"/>	Portuguese - Portugal
<input type="checkbox"/>	Romanian
<input type="checkbox"/>	Russian

Click on **Save** to apply the changes to the configuration. You must restart Web Query for the changes to take effect.

Step 2: Set the default numeric formatting

If you wish to change the default numeric formatting, click on Custom Settings. By setting the value for Continental Decimal Notation (CDN), you can adjust the default behavior for numeric data.

SET CDN= [ON | OFF | SPACE | QUOTE | QUOTEP]

ON enables CDN. For example, the number 3,045,000.76 is represented as 3.045.000,76.

OFF disables CDN. For example, the number 3,045,000.76 is represented as 3,045,000.76. **OFF** is the default value.

SPACE separates groups of three significant digits with a space instead of a comma, and marks a decimal position with a comma instead of a period. For example, the number 3,045,000.76 is represented as 3 045 000,76.

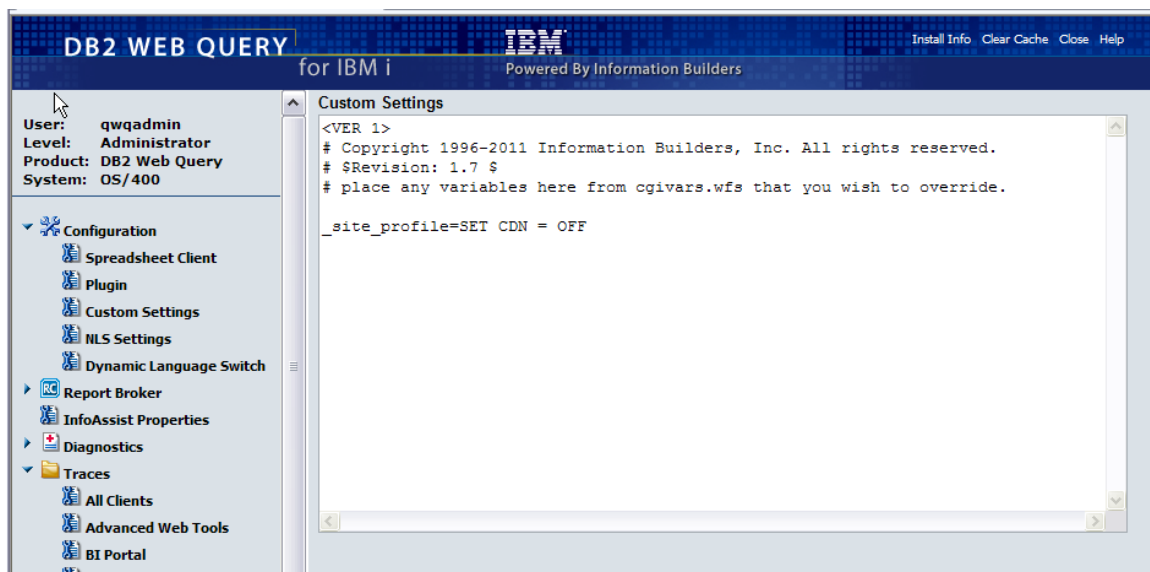
QUOTE separates groups of three significant digits with a single quotation mark instead of a comma, and marks a decimal position with a comma instead of a period. For example, the number 3,045,000.76 is represented as 3'045'000,76.

QUOTE P separates groups of three significant digits with a single quotation mark instead of a comma, and marks a decimal position with a comma. For example, the number 3,045,000.76 is represented as 3'045'000.76.

Example syntax:

```
_site_profile=SET CDN = OFF
```

Note that if the display format of a Web Query report is Excel 2000 or later, CDN is controlled by the settings on an end user's computer. That is, numbers in report output are formatted according to the convention of the locale (location) set in regional or browser language options.



Step 3: Set the default currency

If you wish to change the default currency, edit the file

</qibm/userdata/qwebqry/ibi/srv77/wfs/etc/nlscfg.err>.

The file is created when Web Query is started. Add the three letter code for the currency symbol you would like to use. The options are:

- EUR (Euro)
- USD (United States dollar)
- GBP (Pound sterling)
- JPY (Japanese yen)
- NIS (Israeli new shekel)

For example, to specify the Euro, set `CURRENCY = EUR`.

You must end DB2 Web Query and restart it for the change to take effect.

Step 4: Enable visual data support

Only perform this step if you are configuring Hebrew bi-directional language support. Enable Visual data support by editing the file [/QIBM/userdata/qwebqry/base80/client/wfc/etc/cgivars.wfs](#). Change the WFTRANSINOUT setting to add the path com.srl.exits.WFExit. Note that it is case sensitive. Following is an example of how it should look:

```
WFTRANSINOUT    =com.srl.exits.WFExit
```

Save and close the file.

Step 5: Set the CCSID for Qshell

If you are using the Arabic language and CCSID 420, the following steps are needed to specify an alternative CCSID for Web Query programs that run in Qshell, because Qshell does not support CCSID 420.

1. Enter the command: `wrklnk`
`'/qibm/userdata/qwebqry/WQLIB85/conf/i5OSSstartup.properties'`
2. Select option 2=Edit.
3. Edit the file to add this line: `engine.job.ccsid=425`
4. Press F3 to save the changed file.

APPENDIX B: Code page mapping table

The table below contains a mapping from the i CCSID to the Web Query Reporting Server codepage. By default, the client codepage is 65001 Unicode (UTF-8) for use with any server codepage.

IBM i CCSID	Reporting Server codepage	Client codepage (NLS value on Web Query administrator's console)	Language ID
1140 or 037	37	137/1252	
1141 or 273	273	137/1252	DEU
1142 or 277	277	137/1252	DAN or NOR
1143 or 278	278	137/1252	FIN
1144 or 280	280	137/1252	ITA
1145 or 284	284	137/1252	ESP
1146 or 285	285	137/1252	ENG
1147 or 297	297	137/1252	FRA
420	420	1089/1256	ARA
424	424	1255	HEB
1148 or 500	500	137/1252	DES
838	838	874	THA
870	870	1250	HUN, PLK, ROM, CSY, SKY or HRV
875	875	1253	ELL
933	933	949	KOR
935	935	946	CHS
937	937	10948	CHT
1025	1025	1251	RUS
1026	1026	1254	TRK
1047	1047	137/1252	
1112	1112	1257	LVA or LTU
930 or 5026	930	942	JPN
939 or 5035	939	942	JPN
Any	Any	65001	Any